

Schwartz Auditorium *TEC classroom, level A*

Access Code: provided upon authorization

This room utilizes a high resolution data projector located in the projection booth, an electric screen, and full touch panel controls.

Lighting Controls

Light switches are located on stage, behind the Instructor Lectern. This allows you to darken the front of the room for display.

Displaying PC or Laptop

1. Touch the Crestron touch panel to wake up the system. Follow text prompt of “Press anywhere to start.” Enter the access code (provided upon authorization) on the touch panel, followed by “Enter”.
2. Select **DESKTOP PC**, **LAPTOP VGA** or **LAPTOP HDMI** (both a laptop cable w/ sound and an HDMI cable are in view at the lectern). The screen will lower and the projector will power automatically. *We recommend WSXGA resolution (1280x768 pixels) for best results. Please allow 90 second warm up time for the projector.*
3. **PC LOGON:** ***Use your UNET name and password, in the USERS domain. *** **Going wireless with a laptop:** *You can log on using your UNET name and password, or if your laptop is not registered on the network, you can log onto the guest network when prompted, after opening a browser.*
4. Volume levels from any source may be controlled using the **VOLUME** buttons on the touch panel. *Make sure audio amplifier (and all rack items) are powered ON for proper performance. Rack is located behind the lectern to your left.*

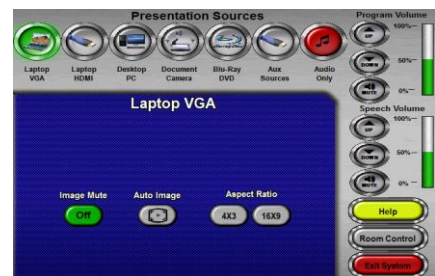
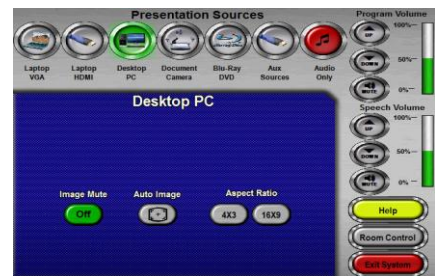
Playing BluRay, DVDs, or Videotapes

1. The **BluRay DVD** player is located in the rack at the instructor station. It will play either BluRay or more traditional DVD discs. *Standard DVD's can also be played in the Instructor PC.*
2. Select the **BluRay DVD** button on the touch panel station. *Disc controls will appear on the touch panel. It will take several seconds for the digital system to read the disc.*
3. Select **VHS/VCR** to playback legacy VHS video tapes. Disc & tape controls appear on the touch panel after device selection.
4. **Volume levels** from any source may be controlled using the **VOLUME** buttons on the touch panel. *Make sure audio amplifier (and all rack items) are powered ON for proper performance. Rack is located under the instructor space.*
- 5.

6. Utilizing “Audio only” presentations

Audio CDs can be played in the **BluRay** player, the **PC** or a **laptop**.

1. Insert your CD into the selected device. **If beginning a class and using no video, select the **AUDIO ONLY** button on the touch panel.**
2. Select the device on the touch panel by pressing the proper button, either **PC**, **LAPTOP** or **DVD**.
3. **iPod type devices** can be connected at the instructor lectern. A cable is stored in the lectern for connectivity.
4. Use touch panel **ROOM CONTROLS** to **MUTE** the image or **TURN OFF** the display during “audio only” media playback. **Allow time for cool down before restarting!**



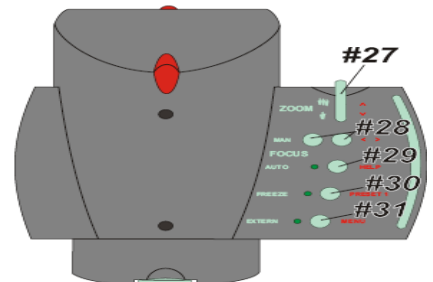
Using the Document Camera

Select the **DOCUMENT CAMERA** button on the touch panel.

The **Doc Cam** is located on the low surface at the instructor lectern. *Pull up gently to turn on the camera and properly set the lens.*

- I. The **DOC CAM** allows high quality display and archiving of paper, acetates, objects, or slides. For full instructions: http://www.wolfvision.com/wolf/bro_9plus_e.pdf
- II. The **Doc Cam head** provides a number of controls, including:
 - #27 ZOOM WHEEL** - Zoom in & out on your image.
 - #28 Manual FOCUS keys** - Focus the image
 - #29 AUTO FOCUS** - Allow auto focus
 - #30 FREEZE key** - Freeze/un-freeze image on screen
 - #31 EXTERN key** - Switches to rear-mounted input port

Turn OFF doc cam at end of presentation by gently lowering the camera head to the surface deck. Call MTS (6-4632) for detailed training sessions!



Using Microphones

Lectern-mounted microphone:

1. This is located directly on the instructor station. The microphone is "on" when the system is turned on.
2. **Volume levels** for the microphones are controlled using the **VOLUME** buttons on the touch panel. *Make sure audio amplifier (and all rack items) are powered ON for proper performance. Rack is located under the instructor station.*

Wireless microphones: Stored at the Instructor area are (1) wireless lav (clip on) mic and (1) wireless hand held mic. These can be used simultaneously.

1. Remove the wireless mic from below the instructor lectern.
2. Turn the microphone's power switch "ON." Adjust room volume the as noted above. Spare batteries are kept in the lectern.

External Microphones: These can be connected at stage floor or the equipment rack at the lectern. Call MTS (ext.6-4635) for external gear.



Assisted Listening

One (1) assisted listening receiver is available in the instructor area. Contact Media Technology Services (MTS) for assistance if you encounter any difficulty, or if you require additional receivers.

Lighting Controls & Display/Prop support bar

*** Light switches are located on stage, behind the Instructor Lectern. They will allow you to darken the front of the room for improved viewing. A display or prop support bar is accessed via a wall switch in the same location. This allows you to hang banners or drape, without hanging from the screen. ***

When Finished -- IT IS IMPORTANT TO BE SURE YOU HAVE TURNED OFF THE PROJECTOR!

Unless the next class is already entering your room, press the **red SHUT DOWN SYSTEM** button on the touch panel, and confirm your selection. Follow instructions on the touch screen. Be sure the projector begins its 90 second shutdown process. Please return items to storage & neaten up for the next user.

